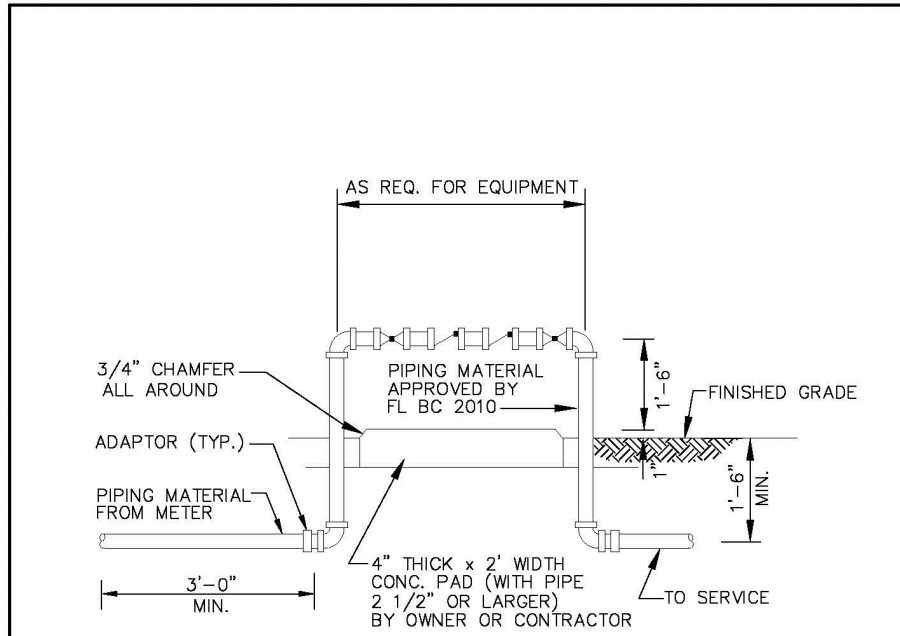


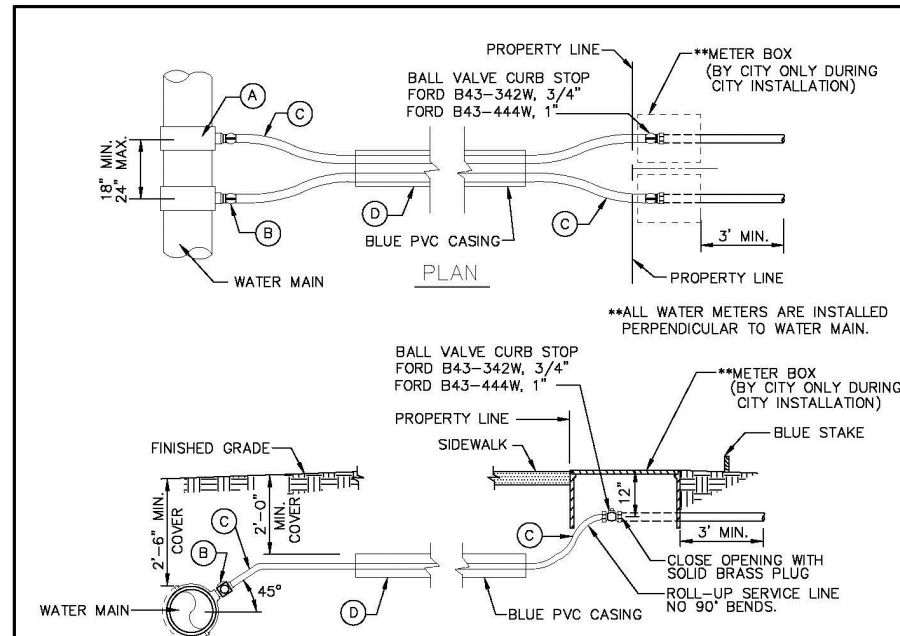
UTILITY DETAILS PLAN



BACKFLOW PREVENTER

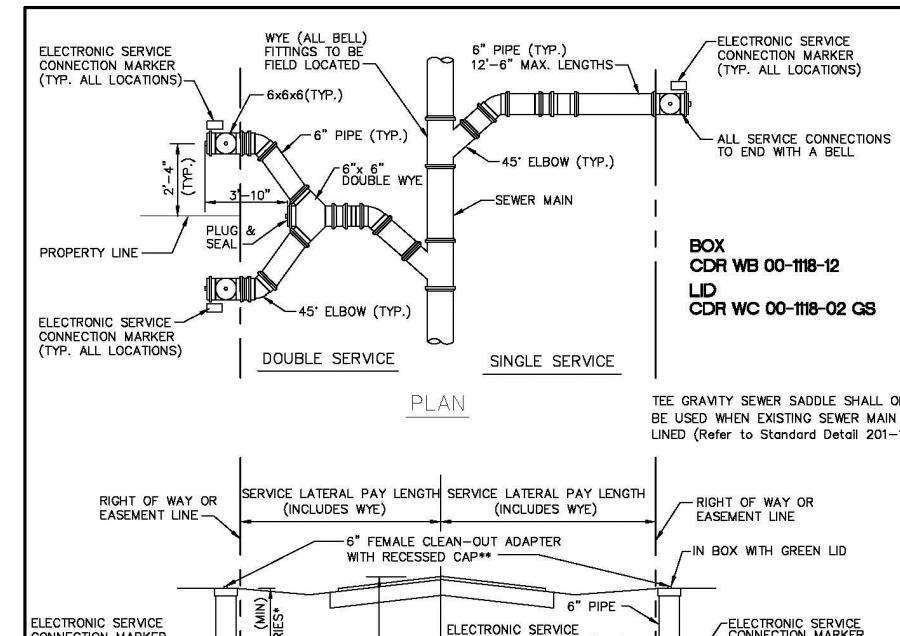
USE MEGALUGS AT ALL PIPE JOINTS 3" AND LARGER
PLEASE SEE METER INSTALL. DIMENSION LIST ON STANDARD NO. 106-4
SMALL UNITS UNISTRUT SUPPORT

ENGINEERING STANDARDS 2019			
REVISIONS	BY	DATE	DESCRIPTION
	ENGINEERING DIVISION		BACKFLOW PREVENTER
	CITY OF POMPAÑO BEACH		
	DATE: JUNE 1996		
	DWG. NO.		106-1
	SCALE: N.T.S.		



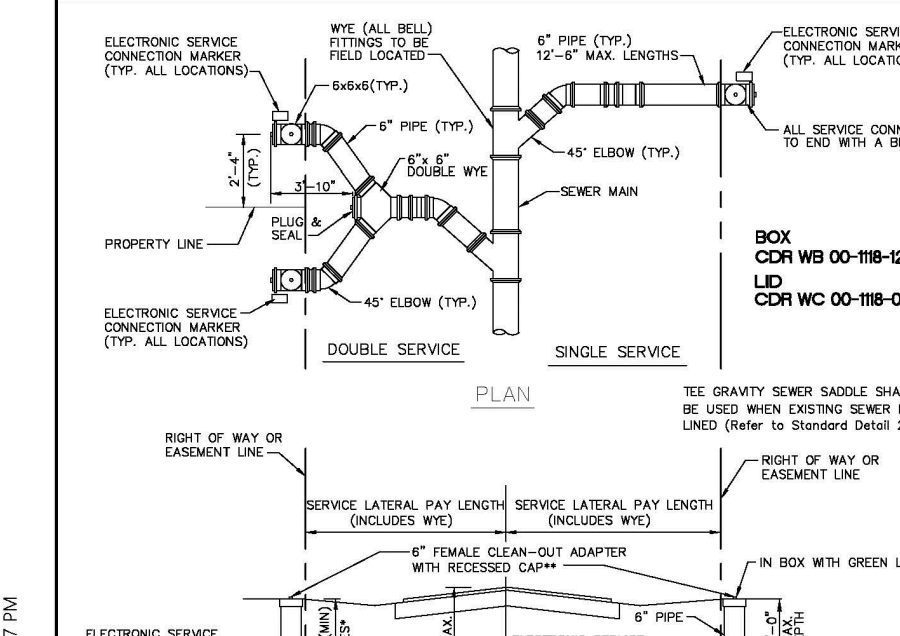
TYPICAL 1" WATER SERVICE

ENGINEERING STANDARDS 2019			
REVISIONS	BY	DATE	DESCRIPTION
	ENGINEERING DIVISION		TYPICAL 1" WATER SERVICE
	CITY OF POMPAÑO BEACH		
	DATE: JUNE 2004		
	DWG. NO.		107-1
	SCALE: N.T.S.		



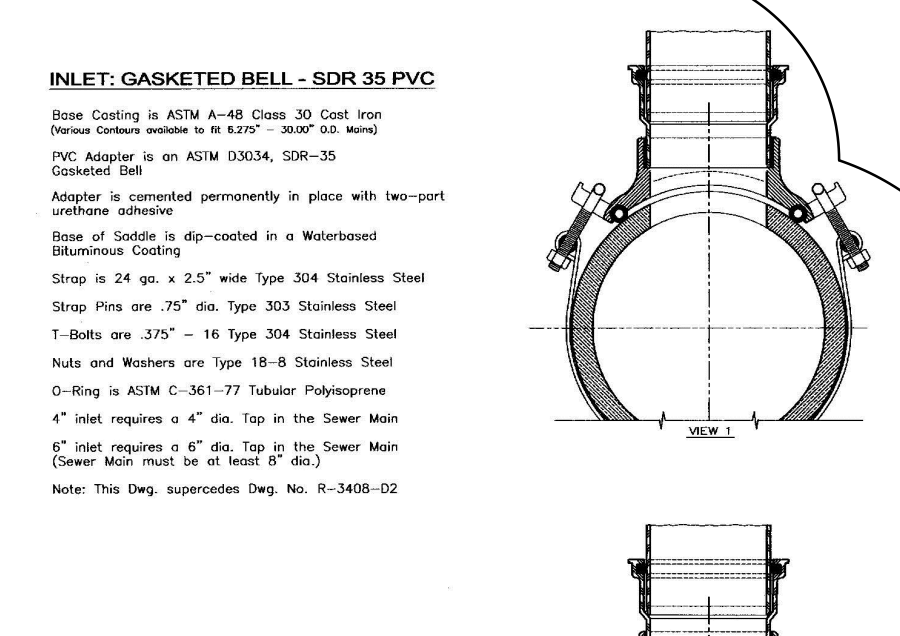
SERVICE LATERALS WITH RISERS

ENGINEERING STANDARDS 2019			
REVISIONS	BY	DATE	DESCRIPTION
	ENGINEERING DIVISION		SERVICE LATERALS
	CITY OF POMPAÑO BEACH		
	DATE: JUNE 1996		
	DWG. NO.		200-1
	SCALE: N.T.S.		



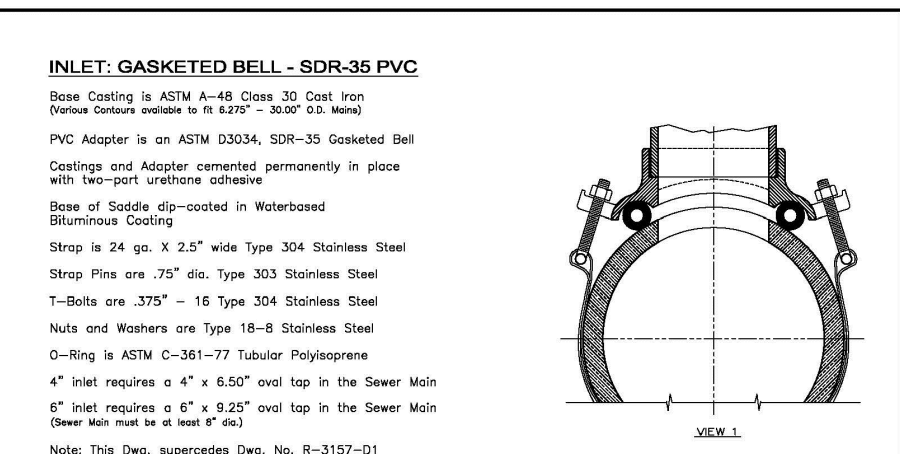
SHALLOW SERVICE LATERALS

ENGINEERING STANDARDS 2019			
REVISIONS	BY	DATE	DESCRIPTION
	ENGINEERING DIVISION		SERVICE LATERALS
	CITY OF POMPAÑO BEACH		
	DATE: JUNE 1996		
	DWG. NO.		200-2
	SCALE: N.T.S.		



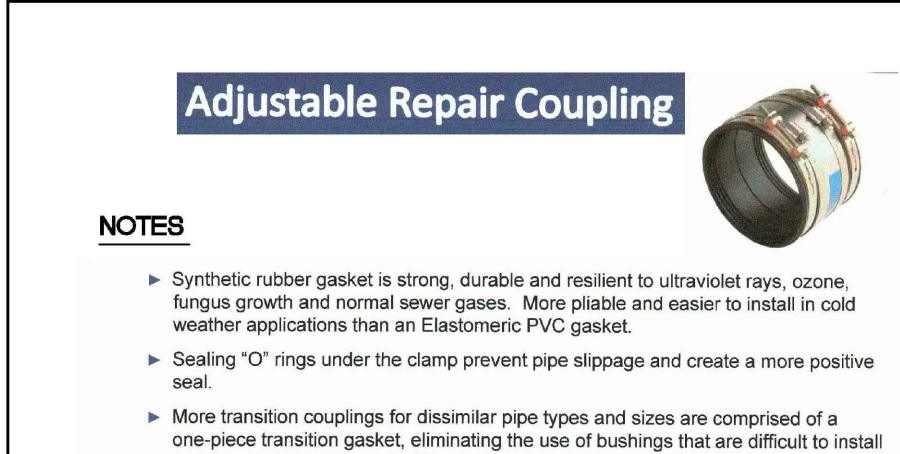
TEE GRAVITY SEWER SADDLE

ENGINEERING STANDARDS 2019			
REVISIONS	BY	DATE	DESCRIPTION
	ENGINEERING DIVISION		TEE GRAVITY SEWER SADDLE
	CITY OF POMPAÑO BEACH		
	DATE: JAN 2012		
	DWG. NO.		201-1
	SCALE: N.T.S.		



WYE GRAVITY SEWER SADDLE

ENGINEERING STANDARDS 2019			
REVISIONS	BY	DATE	DESCRIPTION
	ENGINEERING DIVISION		WYE GRAVITY SEWER SADDLE
	CITY OF POMPAÑO BEACH		
	DATE: NOV 2016		
	DWG. NO.		201-2
	SCALE: N.T.S.		



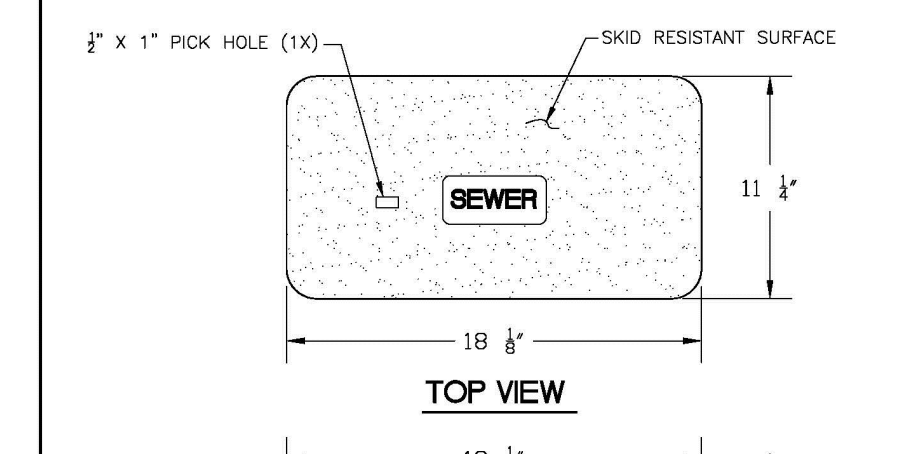
NOTES

- Synthetic rubber gasket is strong, durable and resilient to ultraviolet rays, ozone, fungus growth and normal sewer gases. More pliable and easier to install in cold weather applications than an Elastomeric PVC gasket.
- Sealing "O" rings under the clamp prevent pipe slippage and create a more positive seal.
- More transition couplings for dissimilar pipe types and sizes are comprised of a one-piece transition gasket, eliminating the use of bushings that are difficult to install and easy to lose on the job site.
- Surgical Grade 316 stainless steel Nut & Bolt clamps are corrosion resistant, providing outstanding protection in severe environments such as marine applications, poorly aerated or moist soils, contaminated ground conditions (particularly industrial fill sites) and where the ground water contains chloride, sulfates or bicarbonates. Increased band tension of the Nut & Bolt clamp ensures a leak-proof, root-proof seal that is resistant to both infiltration and exfiltration.
- Series 300 stainless steel shear band is the heaviest in the industry, over 33% thicker than the competition.
- Broadest range of couplings on the market in sizes ranging from 1 1/2" to 96" in diameter. Used for the alteration and rehabilitation of gravity-flow sewage pipes made of clay, cast iron, plastic, concrete, ductile iron, asbestos cement, fiber cement and truss pipe.

Finish and install stainless steel shielded sewer couplings, as manufactured by Mason Rubber Company. Coupling to meet ASTM C 1173 Gasket to meet ASTM C 425 Table 2; to be rubber and be environmentally certified. Series 300 stainless steel shear band with a minimum thickness of 0.12"; surgical grade 316 stainless steel clamps with nut & bolt take up, shear ring and clamps to meet all requirements of ASTM A 240. All stainless steel parts and clamping mechanisms to be manufactured in the U.S.A. Transitional sizes to utilize a one-piece gasket.

ADJUSTABLE REPAIR COUPLING PVC/CLAY NOTES

ENGINEERING STANDARDS 2019			
REVISIONS	BY	DATE	DESCRIPTION
	ENGINEERING DIVISION		ADJUSTABLE REPAIR COUPLING
	CITY OF POMPAÑO BEACH		
	DATE: JAN 2012		
	DWG. NO.		202-1
	SCALE: N.T.S.		



NOTE

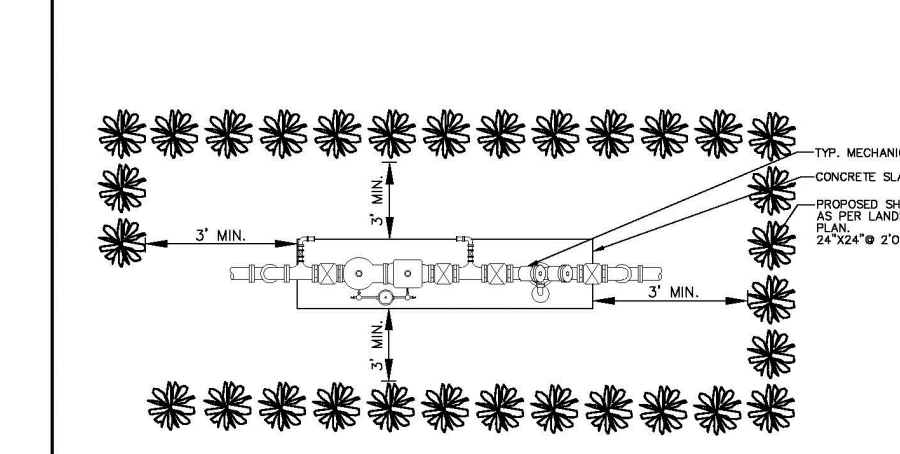
- MATERIAL: FIBERGLASS REINFORCED POLYMER CONCRETE & FIBERGLASS REINFORCED POLYMER
- COLOR: GREEN
- LOAD RATING: AB (ASTM C857)
- LOGO: SEWER

SEWER BOX AND COVER

PRODUCT RATING - TRAFFIC			
LOAD DESIGNATION	DESCRIPTION	DESIGN LOADS	TESTING
		LIVE LBS/INCH (2)	LOADS(LB)
AASHTO HS	MEDIUM TRUCK TRAFFIC	12,000	15,600
		N/A	27,000 (S)
			2.25

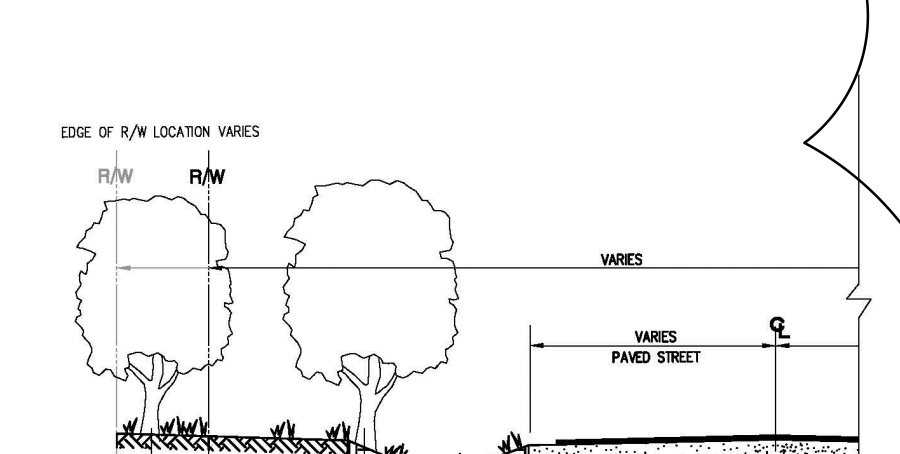
ENGINEERING STANDARDS 2019

ENGINEERING STANDARDS 2019			
REVISIONS	BY	DATE	DESCRIPTION
	ENGINEERING DIVISION		SEWER BOX AND COVER
	CITY OF POMPAÑO BEACH		
	DATE: APRIL 2010		
	DWG. NO.		210-2
	SCALE: N.T.S.		



TYPICAL SCREEN FOR UTILITIES

ENGINEERING STANDARDS 2019			
REVISIONS	BY	DATE	DESCRIPTION
	ENGINEERING DIVISION		TYPICAL SCREEN FOR UTILITIES
	CITY OF POMPAÑO BEACH		
	DATE: APRIL 2010		
	DWG. NO.		315-1
	SCALE: N.T.S.		



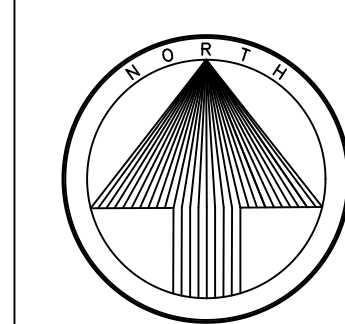
TREE LOCATIONS REQUIRED IN PUBLIC R/W ON UTILITY EASEMENTS

NOTES:
PLEASE NOTE THAT AS PER CITY ORDINANCE(S) 50.02(A) (4) AND 100.35(E), STREET TREES SHALL NOT BE PLACED ON TOP OF OR 5' OF EITHER SIDE OF ANY CITY OWNED UTILITY INFRASTRUCTURE. ALSO, PLEASE NOTE THAT NO TREES SHRUBBERY OR OBSTRUCTION SHALL BE PLACED WITHIN A 3' RADIUS OF A CITY OWNED LATERAL, CLEANOUT OR WATER & OR REUSE METER.

ENGINEERING STANDARDS 2019			
REVISIONS	BY	DATE	DESCRIPTION
	ENGINEERING DIVISION		REQUIRED TREE LOCATIONS
	CITY OF POMPAÑO BEACH		
	DATE: 2016		
	DWG. NO.		316-1
	SCALE: N.T.S.		

© COPYRIGHT 2009

OWNER:
AutoZone, Inc.
123 S. FRONT STREET, 3rd FLOOR
MEMPHIS, TENNESSEE 38103



PREPARED FOR:
AutoZone STORE DEVELOPMENT
Store No.: 6365
3001 W. Atlantic Avenue
Pompano Beach, FL 33069

SCALE: 1" = 20'-0"

REVISIONS

1.	2/7/20	CITY COMMENTS
2.		
3.		
4.		
5.		
6.		
7.		

ARCHITECT:

DRAFTSMAN: CEH

CHECKED BY:

DATE: 11/17/15

PROTOTYPE SIZE

AAC
PZ20-12000007
2/2/21

THIS ITEM HAS BEEN DIGITALLY SIGNED AND SEALED BY GERARDO ZAMORA JR. P.E. ON THE DATE ADJACENT TO THE SEAL.

PRINTED COPIES OF THIS DOCUMENT ARE NOT CONSIDERED SIGNED & SEALED AND THE SIGNATURE MUST BE VERIFIED ON ANY ELECTRONIC COPIES.

Gerardo Zamora
P.E. No. 44207
STATE OF FLORIDA
PROFESSIONAL ENGINEER

Digitally signed by Gerardo Zamora
PROJECT No. 2015-14
DATE: 2020.02.10 07:11:01 -0500

ZAMORA & ASSOCIATES, INC.
ENGINEERING LAND PLANNING
11410 N. KENDALL DRIVE SUITE 302 MIAMI, FLORIDA 33176
(305) 273-7801 FAX (305) 273-9514

AAC
PZ20-12000007
03/03/2020